

Plemons Options



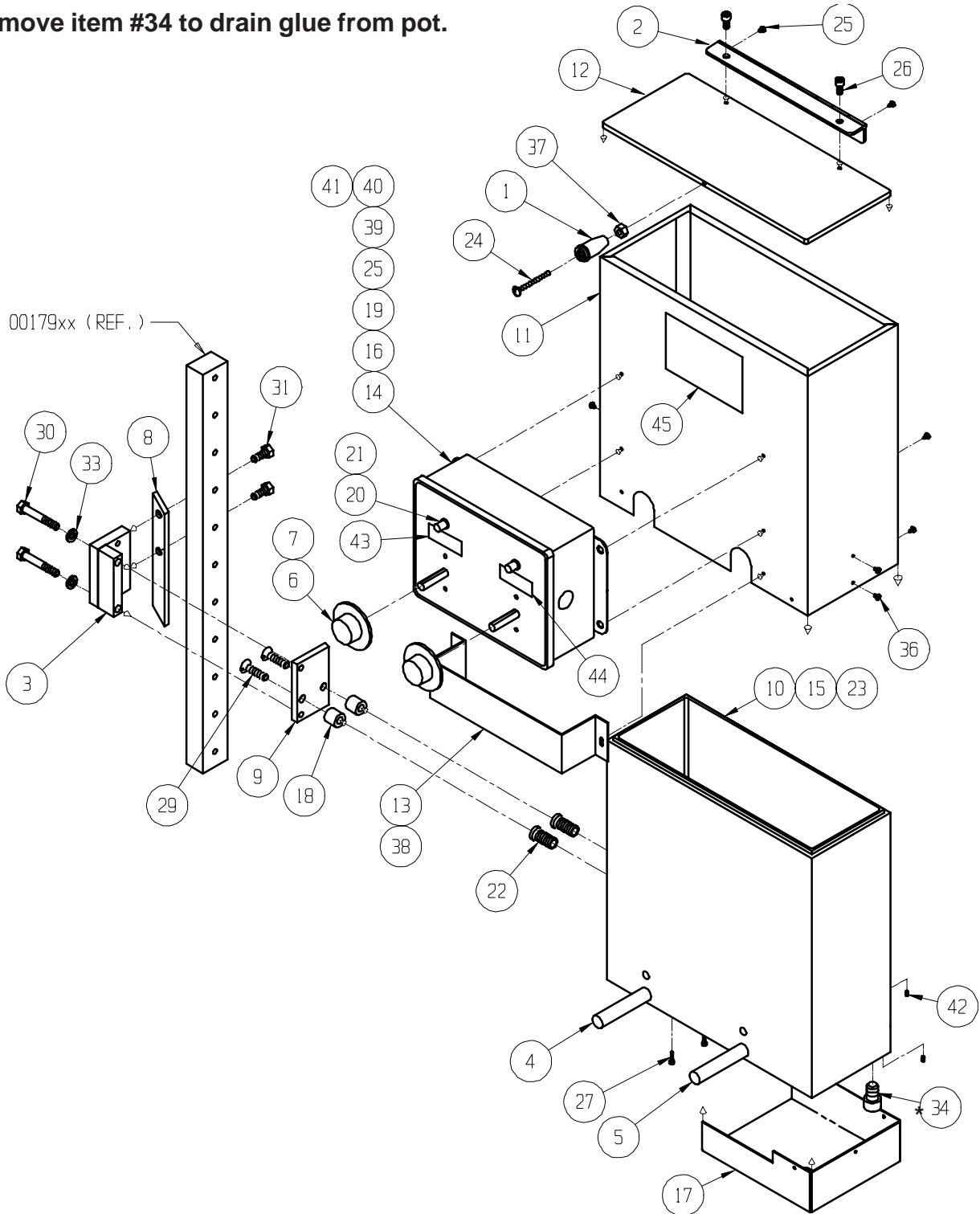
ASSEMBLY 2001702 R/L LARGE CAPACITY ADHESIVE MELT POT ASSEMBLY (TRAY)

ITEM	PART NO.	DESCRIPTION	QTY.
1	0014000	KNOB, ADH. MELT POT COVER	2
2	0069200	HINGE, ADH. MELT POT COVER	2
3	0019700R/L	CLAMP, ADH. MELT POT MTG.	1/1
4	00203(?)	HEATER, ADHESIVE MELT POT	2
5	0020312	HEATER, ADHESIVE MELT POT	2
6	0020402	THERMOSTAT, ADH. MELT POT	4
7	1600202	KNOB, THERMOSTAT	4
8	0022701R/L	BAR, MELT POT CLAMP	1/1
9	0023700R/L	PLATE, ADH. MELT POT MTG	1/1
10	0054400R/L	POT, ADHESIVE MELT	1/1
11	0054500R/L	SHROUD, ADHESIVE MELT POT	1/1
12	0054600	COVER, ADHESIVE MELT POT	2
13	0054700	GUARD, THERMOSTAT WIRE	2
14	0054800R/L	BOX, THERMOSTAT CONTROL	1/1
*15	0054900	SCREEN, ADHESIVE MELT	2
*16	1804502	HOLE PLUG	2
17	0055100R/L	LOWER MELT POT COVER	1/1
18	0204100	BUSHING ADH. MELT POT MTG	4
*19	1400700	RUBBER GROMMET	4
20	1400101	LIGHT, INDICATOR ASSEMBLY	4
*21	1400103	LAMP, INDICATOR CLIP	4
22	1700300	HELI, COIL 5/8 LG	4
*23	1700201	GLUE POT INSERT	4
24	8017500	# 10-32 X 2 LG RD HD	2
*25	8035400	# 12 X 3/8 PAN HD SMS	12
26	8030400	#10-32 X 1/2 LG SKT HD CAP	4
27	8002200	# 10-24 X 1/2 LG SKT FLT HD	4
29	8004900	5/16 NF X 1 1/4 LG FL HD SKT	4
30	8008700	5/16 NC X 2 LG HEX HD	4
31	8004700	5/16 NC X 3/4 LG FL HD SKT	4
33	8036700	5/16 LOCK WASHER	4
34	8034700	1/2-13 SKT HD CAP SCR X 3/4	2
36	8035300	# 8 X 3/8 PAN HD SMS	14
37	8024100	# 10-32 HEX HD NUT	2
*38	8035200	# 8 X 1/4 PAN HD SMS	4
*39	0054801	BACK PANEL	2
*40	1600101	TERMINAL BLOCK	10
*41	1700100	END BARRIER	2
42	8026600	SET SCR, CUP POINT	4
43	1805800	GLUE PUMP STICKER	2
44	1805700	GLUE POT STICKER	2
45	1806500	DANGER HOT STICKER	4

*Not Shown

***Note:**

Remove item #34 to drain glue from pot.



**ASSEMBLY 2001702 R/L
LARGE CAPACITY ADHESIVE
MELT POT ASSEMBLY (TRAY)**